

MODEL : MO-6904 SUBCLASSES

List No : 1316-01

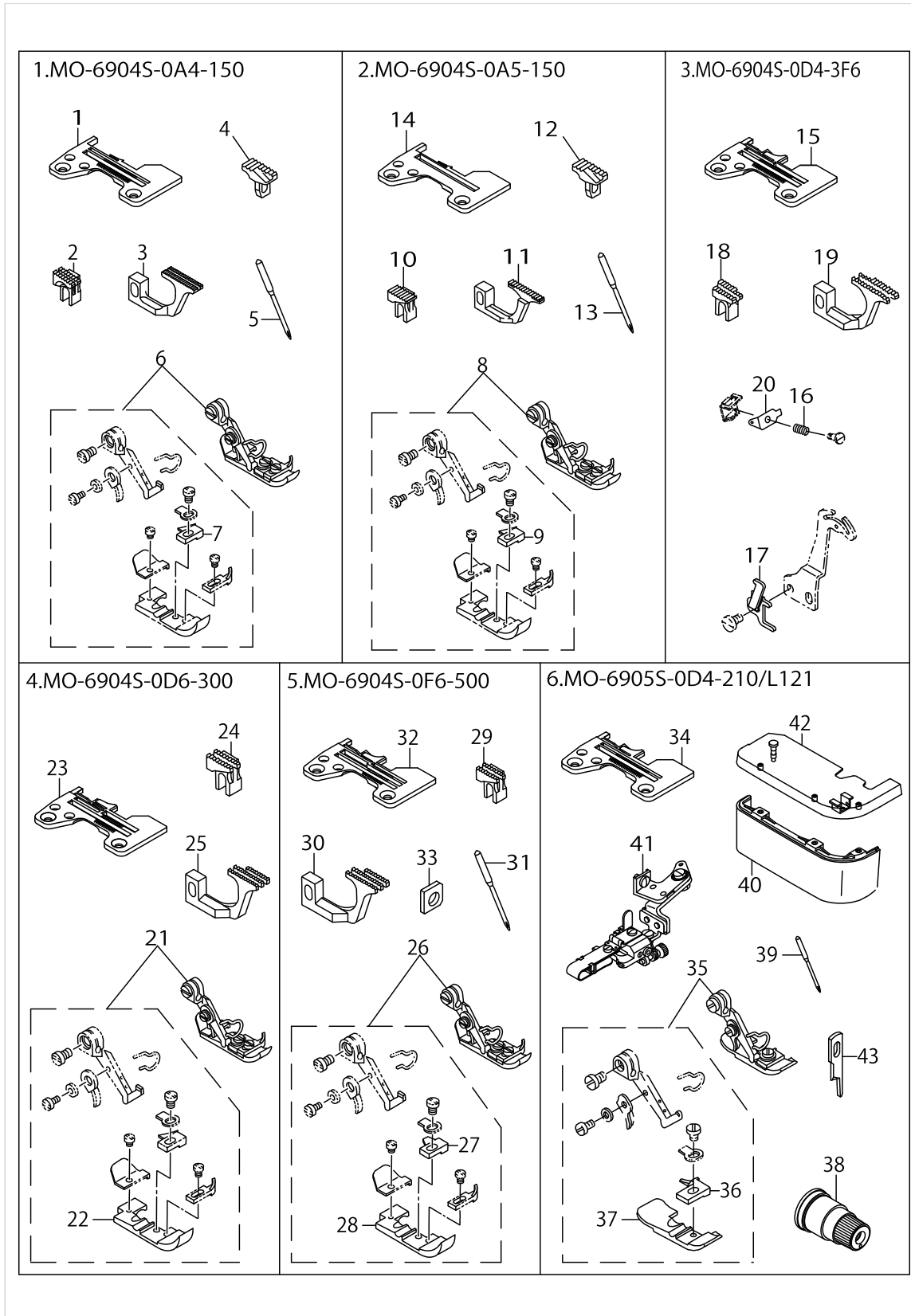
PARTS LIST

Published:05/12/2017

CONTENTS

MO-6904S SUBCLASSES (1)	1
MO-6904S SUBCLASSES (2)	3
HOW TO MAKE USE OF THIS PARTS LIST	5

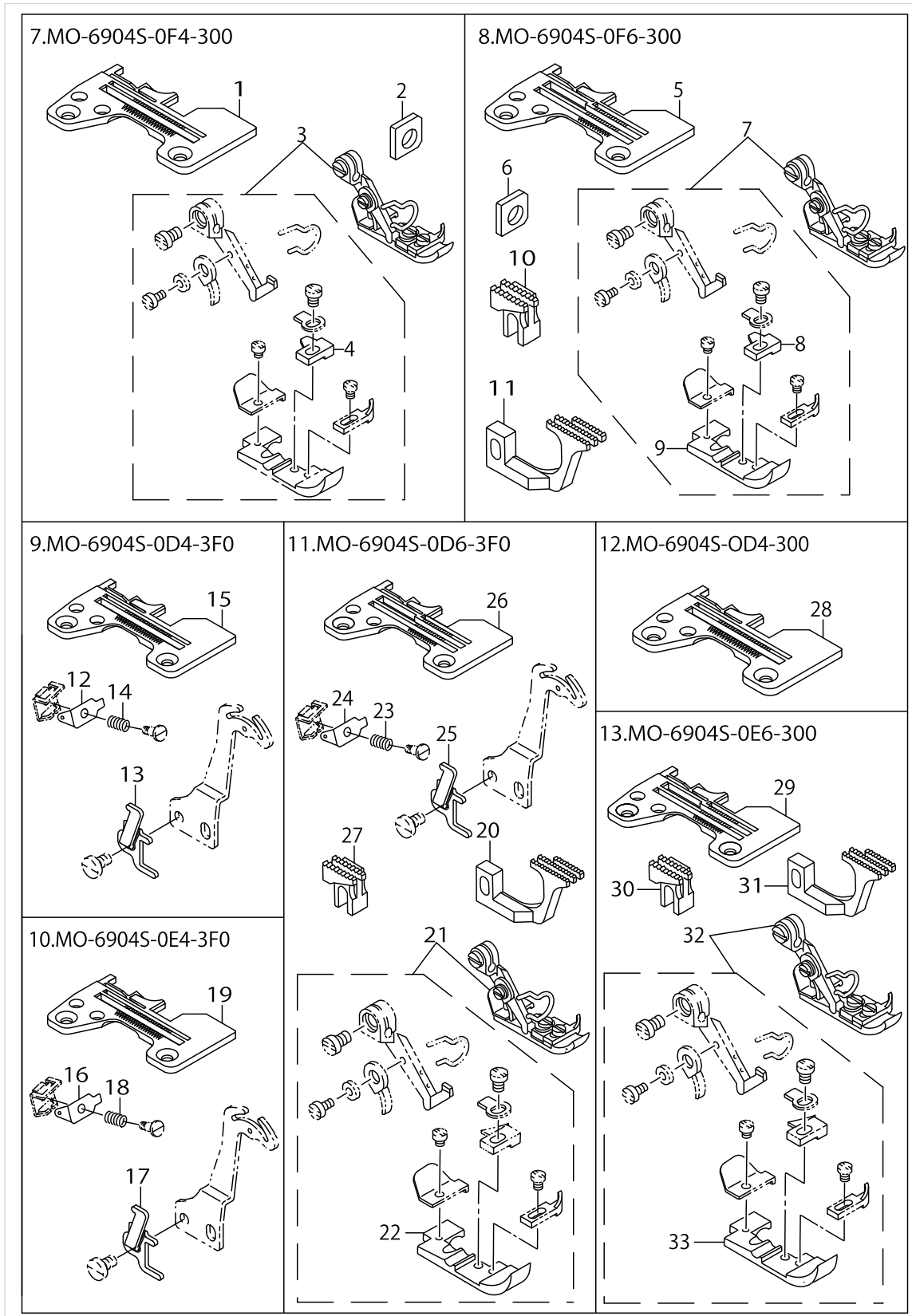
MO-6904S SUBCLASSES (1)



MO-6904S SUBCLASSES (1)

No.	Supply Code	Parts No.	Replacement	Parts name	Remarks	Choice	Step	Level	Cons	Qty	Rep. QTY
1		R4200J6AC00		THROAT PLATE						1	
2		11898905		MAIN FEED DOG						1	
3		11899002		DEFERENTIAL FEED DOG						1	
4		11887007		AUXILIARY FEED DOG						1	
5		MDC100B0800		NEEDLE DCX1 #8						1	
6		11876067		PRESSER FOOT ASM.						1	
7		11792900		STITCH TONGUE				*		1	
8		11876067		PRESSER FOOT ASM.						1	
9		11792900		STITCH TONGUE				*		1	
10		11882008		MAIN FEED DOG						1	
11		11885001		DIFFERENTIAL FEED DOG						1	
12		11887007		AUXILIARY FEED DOG						1	
13		MDC100B0800		NEEDLE DCX1 #8						1	
14		R4100J6AC00		THROAT PLATE						1	
15		R4200J6DD0C		THROAT PLATE						1	
16		12112702		NEEDLE THREAD P- RESSER SPRING B						1	
17		12112603		DIFFERENTIAL FEED CAM						1	
18		11597101		MAIN FEED DOG						1	
19		11886207		DIFFERENTIAL FEED DOG						1	
20		12112504		NEEDLE THREAD P- RESSER PLATE C						1	
21		11876364		PRESSER FOOT ASM.						1	
22		11873007		PRESSER FOOT				*		1	
23		R4300J6DE00		THROAT PLATE						1	
24		11882206		MAIN FEED DOG						1	
25		11885100		DIFFERENTIAL FEED DOG						1	
26		11876463		PRESSER FOOT ASM.						1	
27		B1509804C0A		STITCH TONGUE				*		1	
28		11873007		PRESSER FOOT				*		1	
29		11883303		MAIN FEED DOG						1	
30		11885605		DIFFERENTIAL FEED DOG						1	
31		MDC270B1400		NEEDLE DCX27 #14						1	
32		R4300J6FE0B		THROAT PLATE						1	
33		13132006		GAUGE						1	
34		R4200J6DD00		THROAT PLATE						1	
35	R	11992153	11992161	PRESSER FOOT ASM.						1	1.00
36		11874807		STITCH TONGUE				*		1	
37	R	11992104	11992161	PRESSER FOOT				*		1	1.00
38		13138359		THREAD TENSION SPRING JUNCTION						1	
39		MDC270B0900		NEEDLE DCX27 #9						1	
40		12104709		CLOTHPLATECOVER						1	
41		MAL121000A0		SKIRT DRAGGING COMPL.						1	
42	R	12105557	13106257	CLOTH PLATE ASM.						1	1.00
43		13150602		PLAIN KNIFE						1	

MO-6904S SUBCLASSES (2)



MO-6904S SUBCLASSES (2)

No.	Supply Code	Parts No.	Replacement	Parts name	Remarks	Choice	Step	Level	Cons	Qty	Rep. QTY
1		R4200J6FD00		THROAT PLATE							1
2		13132006		GAUGE							1
3		11876265		PRESSER FOOT ASM.							1
4		B1509804C0A		STITCH TONGUE				*			1
5		R4300J6FE0B		THROAT PLATE							1
6		13132006		GAUGE							1
7		11876463		PRESSER FOOT ASM.							1
8		B1509804C0A		STITCH TONGUE				*			1
9		11873007		PRESSER FOOT				*			1
10		11882206		MAIN FEED DOG							1
11		11885100		DIFFERENTIAL FEED DOG							1
12		12112504		NEEDLE THREAD P- RESSER PLATE C							1
13		12112603		DIFFERENTIAL FEED CAM							1
14		12112702		NEEDLE THREAD P- RESSER SPRING B							1
15		R4200J6DD0A		THROAT PLATE							1
16		12112504		NEEDLE THREAD P- RESSER PLATE C							1
17		12112603		DIFFERENTIAL FEED CAM							1
18		12112702		NEEDLE THREAD P- RESSER SPRING B							1
19		R4200J6ED0A		THROAT PLATE							1
20		11885100		DIFFERENTIAL FEED DOG							1
21		11876364		PRESSER FOOT ASM.							1
22		11873007		PRESSER FOOT				*			1
23		12112702		NEEDLE THREAD P- RESSER SPRING B							1
24		12112504		NEEDLE THREAD P- RESSER PLATE C							1
25		12112603		DIFFERENTIAL FEED CAM							1
26		R4300J6DE0A		THROAT PLATE							1
27		11882206		MAIN FEED DOG							1
28		R4200J6DD00		THROAT PLATE							1
29		R4300J6EE00		THROAT PLATE							1
30		11882206		MAIN FEED DOG							1
31		11885100		DIFFERENTIAL FEED DOG							1
32		11876364		PRESSER FOOT ASM.							1
33		11873007		PRESSER FOOT				*			1

HOW TO MAKE USE OF THIS PARTS LIST

1.As to "#01" and "#02" refer to the "Note" given at the bottom of the respective pages.

2.Codes on the "Qty" column

- Each numeral indicates the number of parts required.
- "0.1" and "2.5" indicate the length (in meters) of the respective parts.

3.Parentheses mean that the corresponding part is a subpart that constructs an assembly part.

4.Dotted lines on the Figures indicate assembly parts.

1. リストページの# 0 1、# 0 2の印は、ページ下の"注記"の説明を参照下さい。
2. 数量欄の数字は、個数を表し、0. 1、2. 5等の数値は、長さ（単位メートル）を表します。
3. 数量欄の（ ）は、組部品を構成している子部品であることを意味します。
4. イラストページの-----枠は、組構成であることを意味します。

NUMERICAL INDEX OF PARTS

PART NO	PAGE	REF NO.	PART NO	PAGE	REF NO.
11597101	2	18	R4200J6DD00	2	34
11792900	2	9	R4200J6DD00	4	28
11873007	2	28	R4200J6DD0A	4	15
11873007	4	33	R4200J6DD0C	2	15
11874807	2	36	R4200J6ED0A	4	19
11876067	2	8	R4200J6FD00	4	1
11876265	4	3	R4300J6DE00	2	23
11876364	2	21	R4300J6DE0A	4	26
11876364	4	32	R4300J6EE00	4	29
11876463	2	26	R4300J6FE0B	2	32
11876463	4	7	R4300J6FE0B	4	5
11882008	2	10			
11882206	2	24			
11882206	4	30			
11883303	2	29			
11885001	2	11			
11885100	2	25			
11885100	4	31			
11885605	2	30			
11886207	2	19			
11887007	2	12			
11898905	2	2			
11899002	2	3			
11992104	2	37			
11992153	2	35			
12104709	2	40			
12105557	2	42			
12112504	2	20			
12112504	4	24			
12112603	2	17			
12112603	4	25			
12112702	2	16			
12112702	4	23			
13132006	2	33			
13132006	4	6			
13138359	2	38			
13150602	2	43			
B1509804C0A	2	27			
B1509804C0A	4	8			
MAL121000A0	2	41			
MDC100B0800	2	13			
MDC270B0900	2	39			
MDC270B1400	2	31			
R4100J6AC00	2	14			
R4200J6AC00	2	1			