

## Instructions for setting up the Wi-Fi Control console

ATTENTION! Recommended WEB browsers - Internet Explorer, Firefox, Google Chrome.

- External power supply voltage - from 5 to 45V, depending on the voltage used in the antenna switch. Own current consumption is not more than 70mA.
- Power is connected to the INPUT\_VDC screw terminals.
- Output current - up to 500 mA
- The screw terminals OUT\_TO\_SWITCH are used to connect to an external antenna switch. The light indication A1-A8 shows which of the pins present a voltage for the switch.
- Range - up to 50m when using an entry-level wi-fi router
- Case dimensions - 115 \* 88 \* 55 mm. ABS plastic, degree of protection IP68, cable glands for a diameter of 3 to 7 mm
- The name of the wi-fi network being created is "RKconsole\_sn\_\_\_"
- Network password - "1234567890"
- IP address of the web server on the RKconsole\_sn\_\_\_ network - 192.168.4.1  
Links for access:
  - 192.168.4.1/wifi** – wifi settings
  - 192.168.4.1/label** – name of antenna labels
  - 192.168.4.1/switch** – page for switch
  - 192.168.4.1/toggle** – page for toggle switch
  - 192.168.4.1** – start page

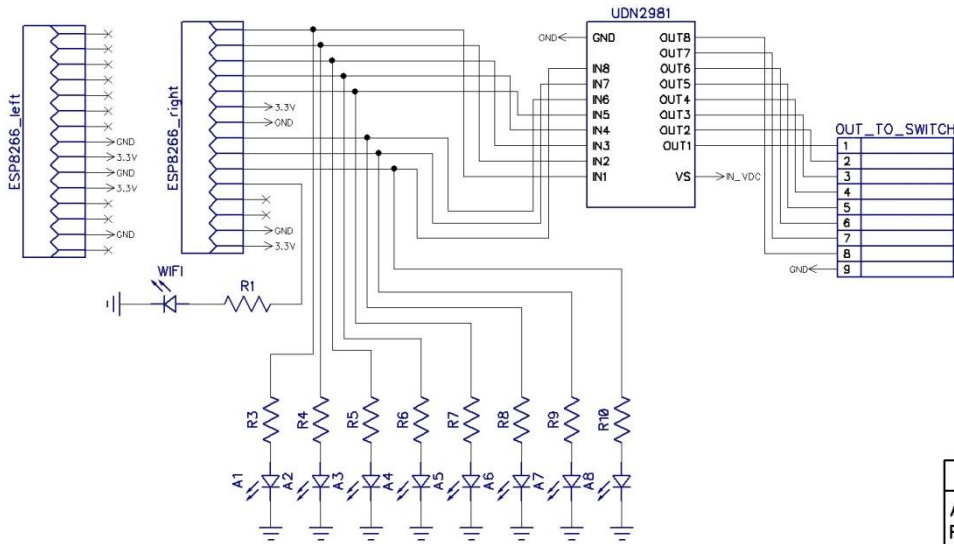
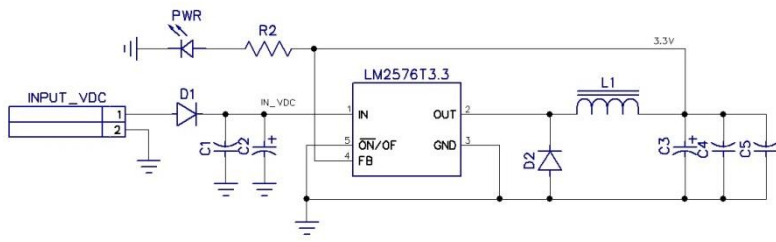
### **Before you start setting up, your router must have DHCP enabled!**

When you first turn on, you need to connect the controller to your WI-FI network. To do this, you must search for available networks on your smartphone or computer. The switch creates a network "RKconsole\_sn\_\_\_" password "1234567890".

After connecting the network, go to the web browser at "http://192.168.4.1/wifi". A window with wifi settings will open. You must enter the name and password of your network and click "Connect / Disconnect"

After that, at the address "http://192.168.4.1/wifi" you can see the IP address of the device in your WI-FI network. Now that the switch is connected to your network, you can disconnect from the "RKconsole\_sn\_\_\_" network. Further, to access the switch's web server, use the IP address issued by your wifi router.

# WI-FI Control Console for hamradio



RefDes	Value	Name
A1-A8, PWR,Wi-Fi	LED SMD	FYLS-0805
C1,C4	100n	CAP_1206
C2,C3	1000uF 50V	CAP200RP
C5	10n	CAP_1206
D1,D2		1N5822
L1	100uH	RLB0914-101KL
R1-R10	1k	RES_1206